



مستشفى الملك فيصل التخصصي ومركز الأبحاث
**King Faisal Specialist Hospital
and Research Centre**



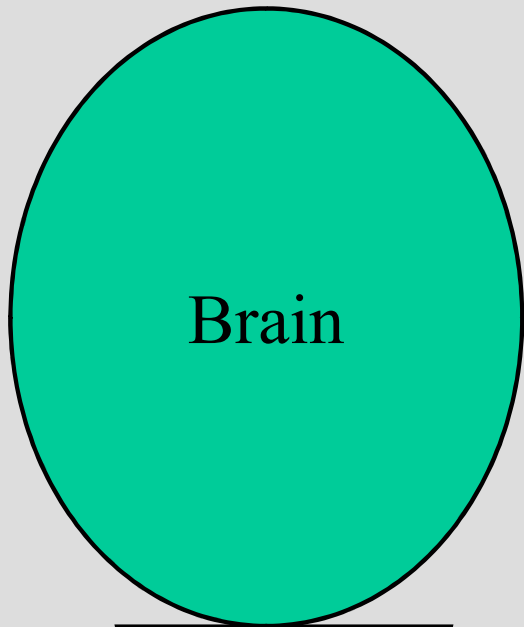
اللطائف العمرية في فحص الجملة العصبية

Neuro-Anatomy Not To Forget

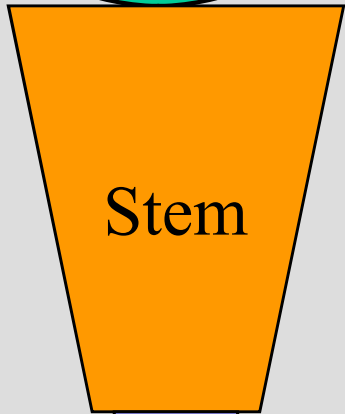
Omar M. Wazzan
Neurosciences Department
KFSH & RC-J

NNN 2007, KAU-J, April 2007

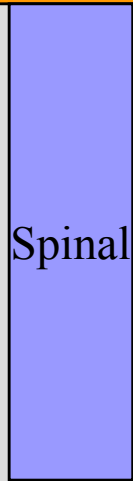




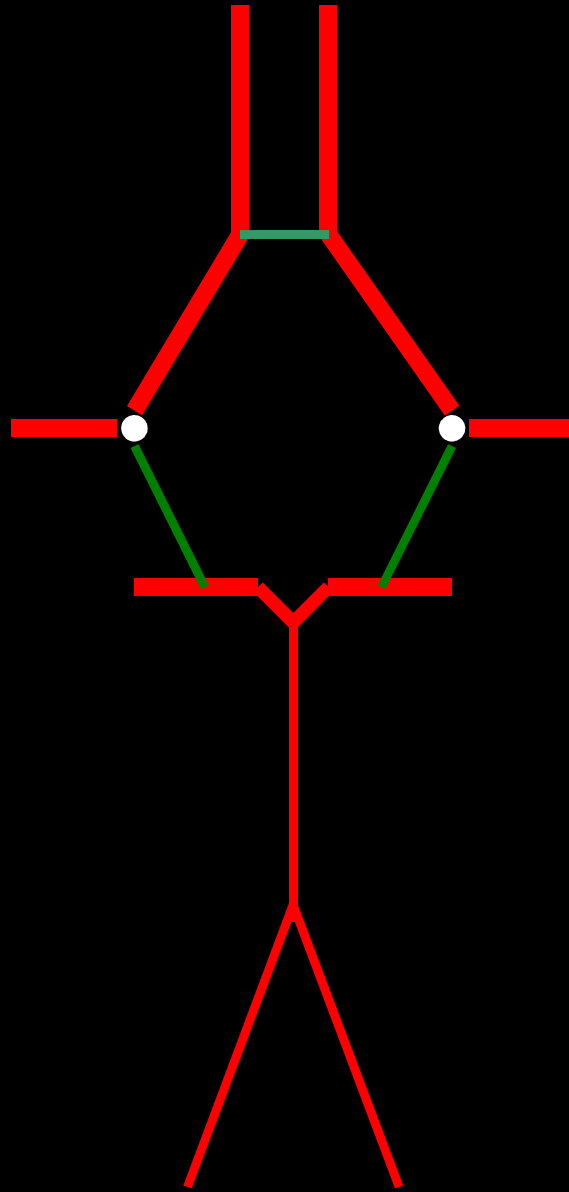
Brain

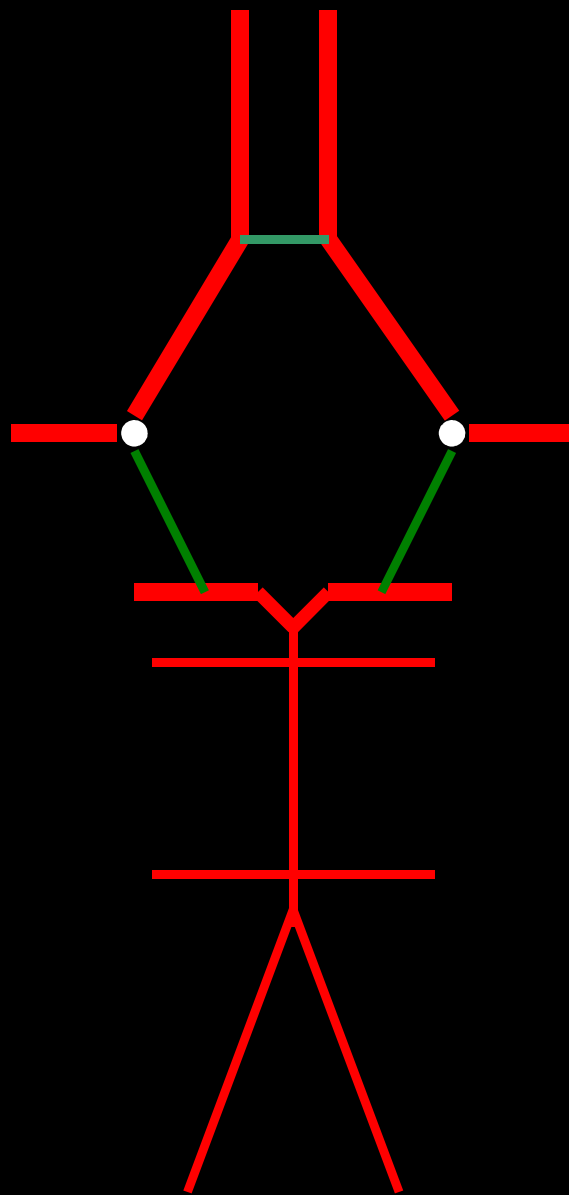


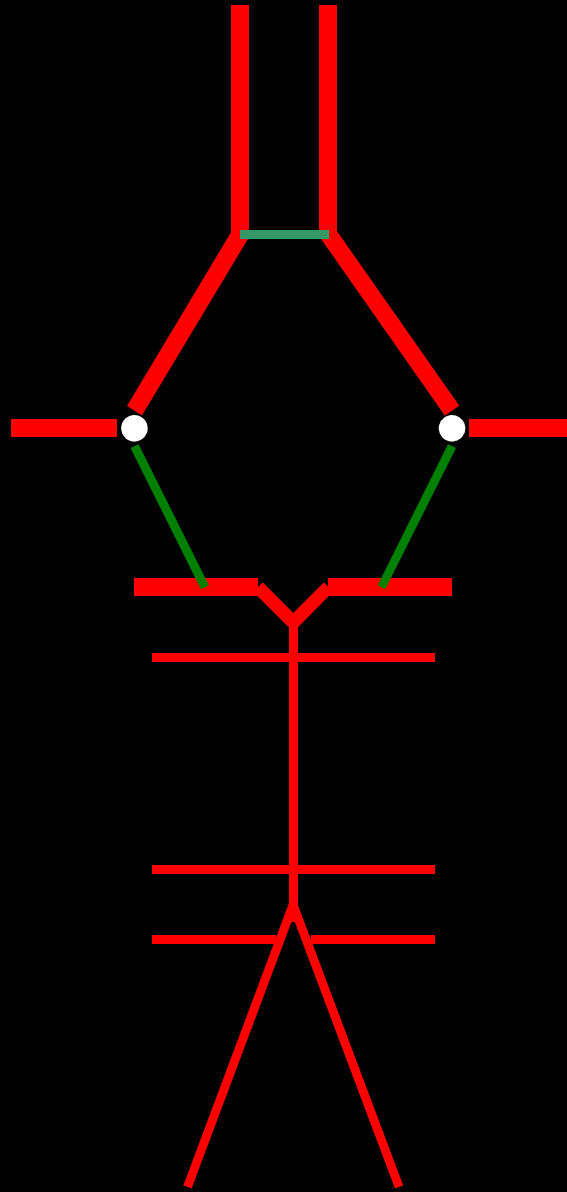
Stem

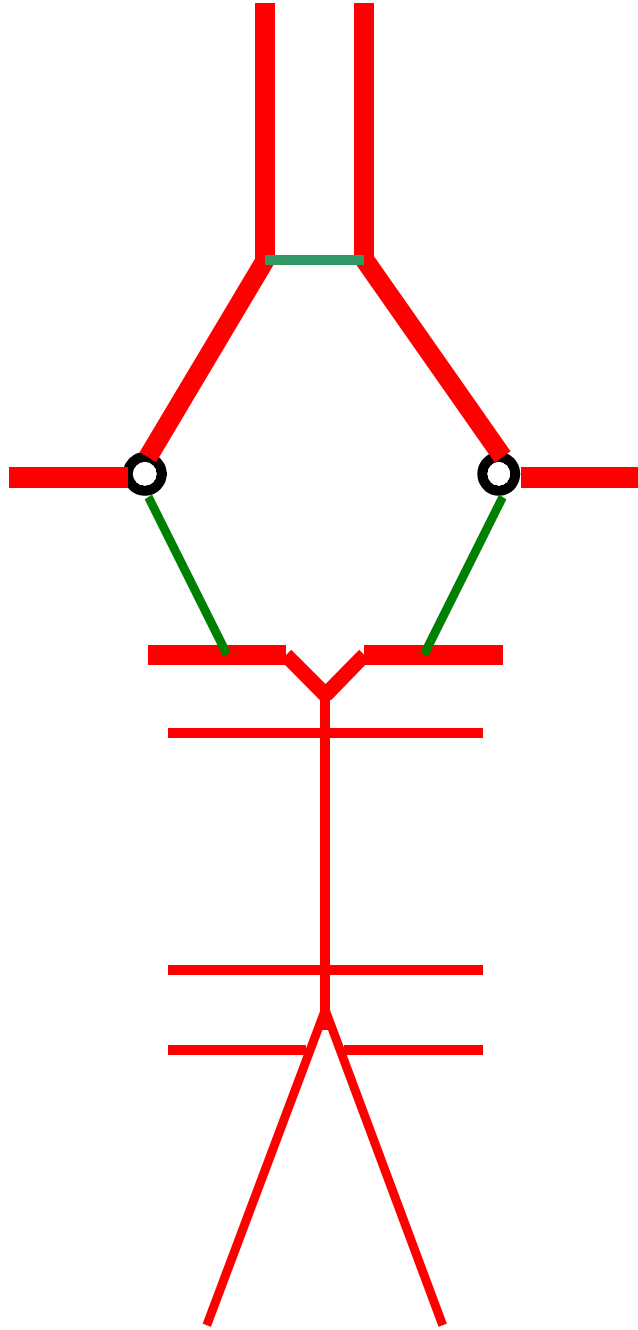


Spinal









ACA

A Com.

MCA

P Com.

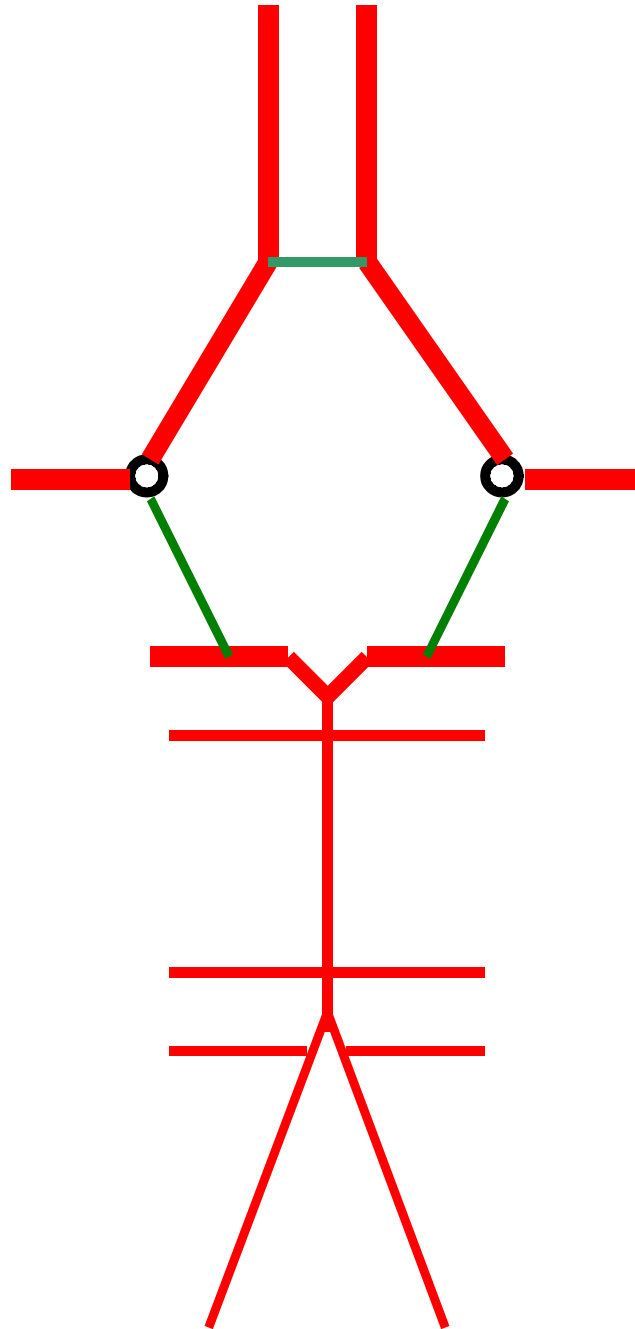
PCA

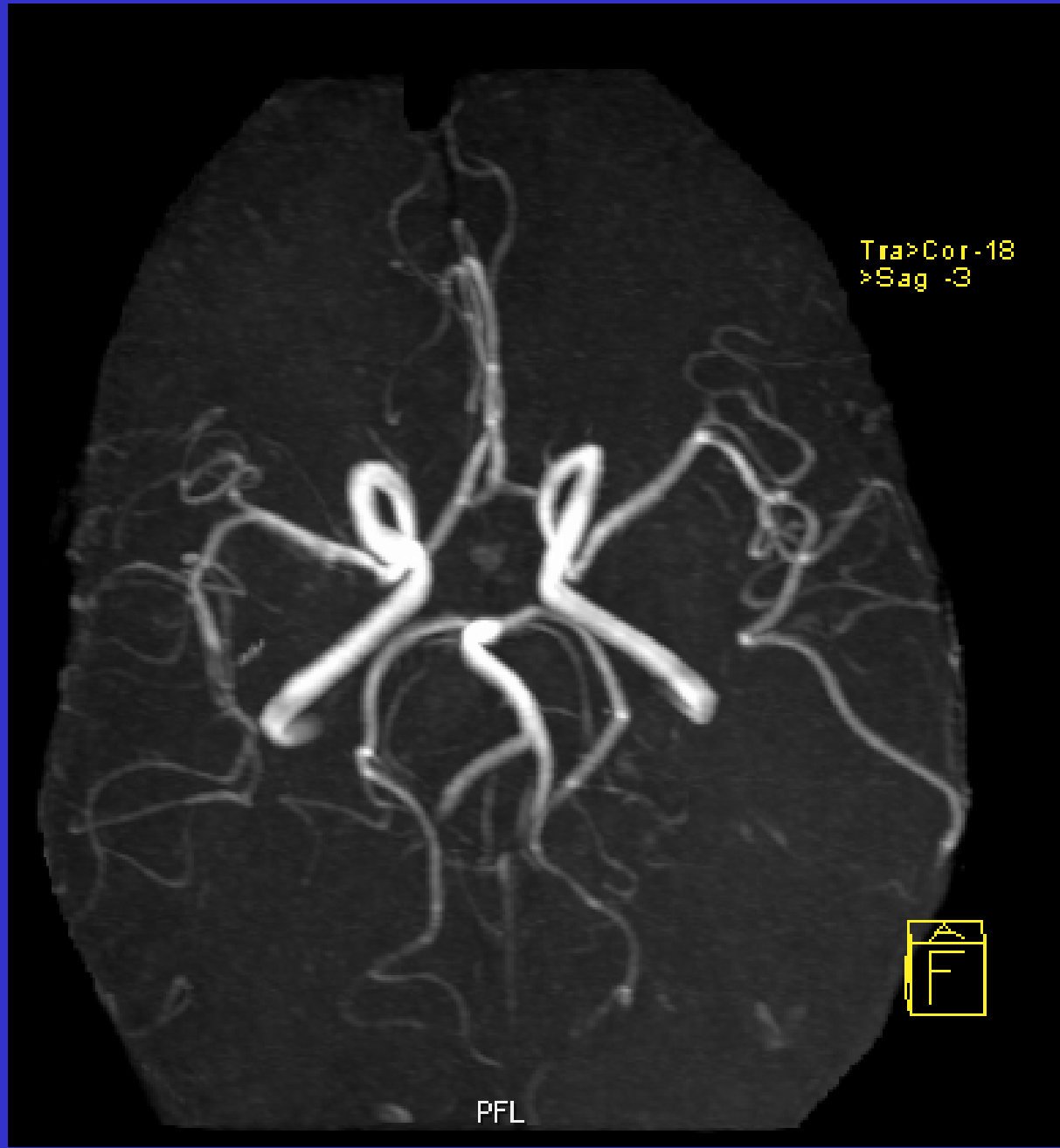
SCA

AICA

PICA

VA





Aphasia, vision

III

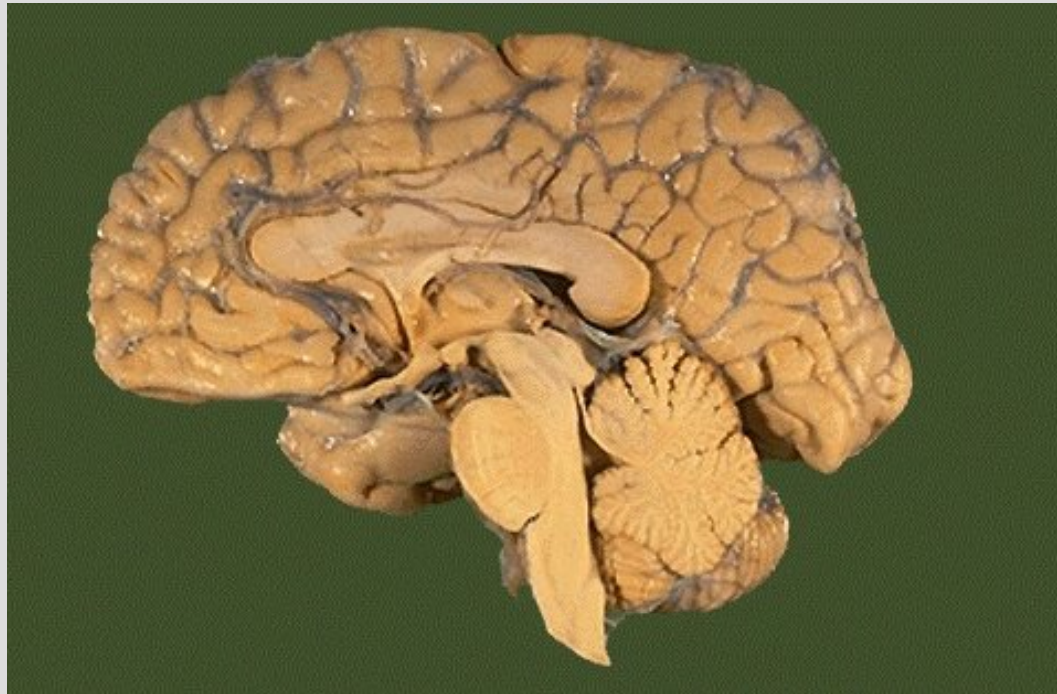
VII

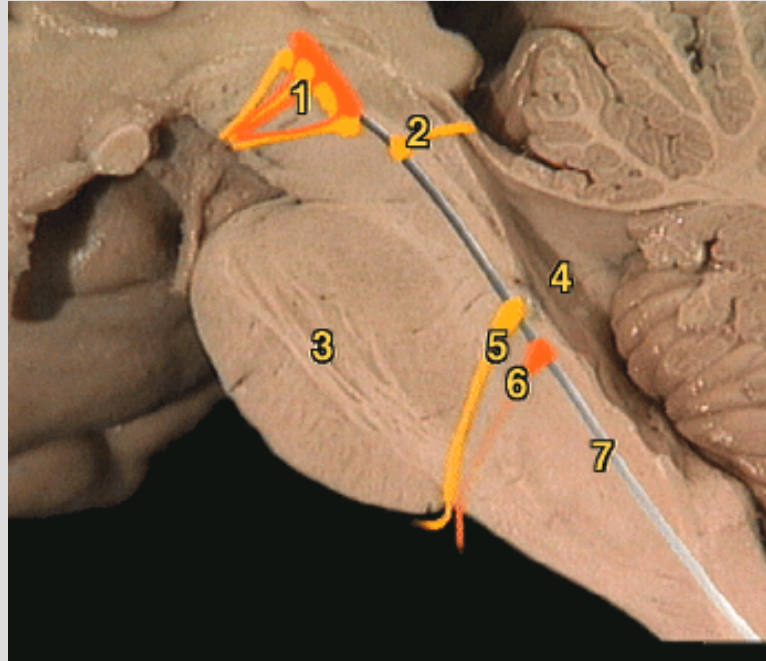
XII

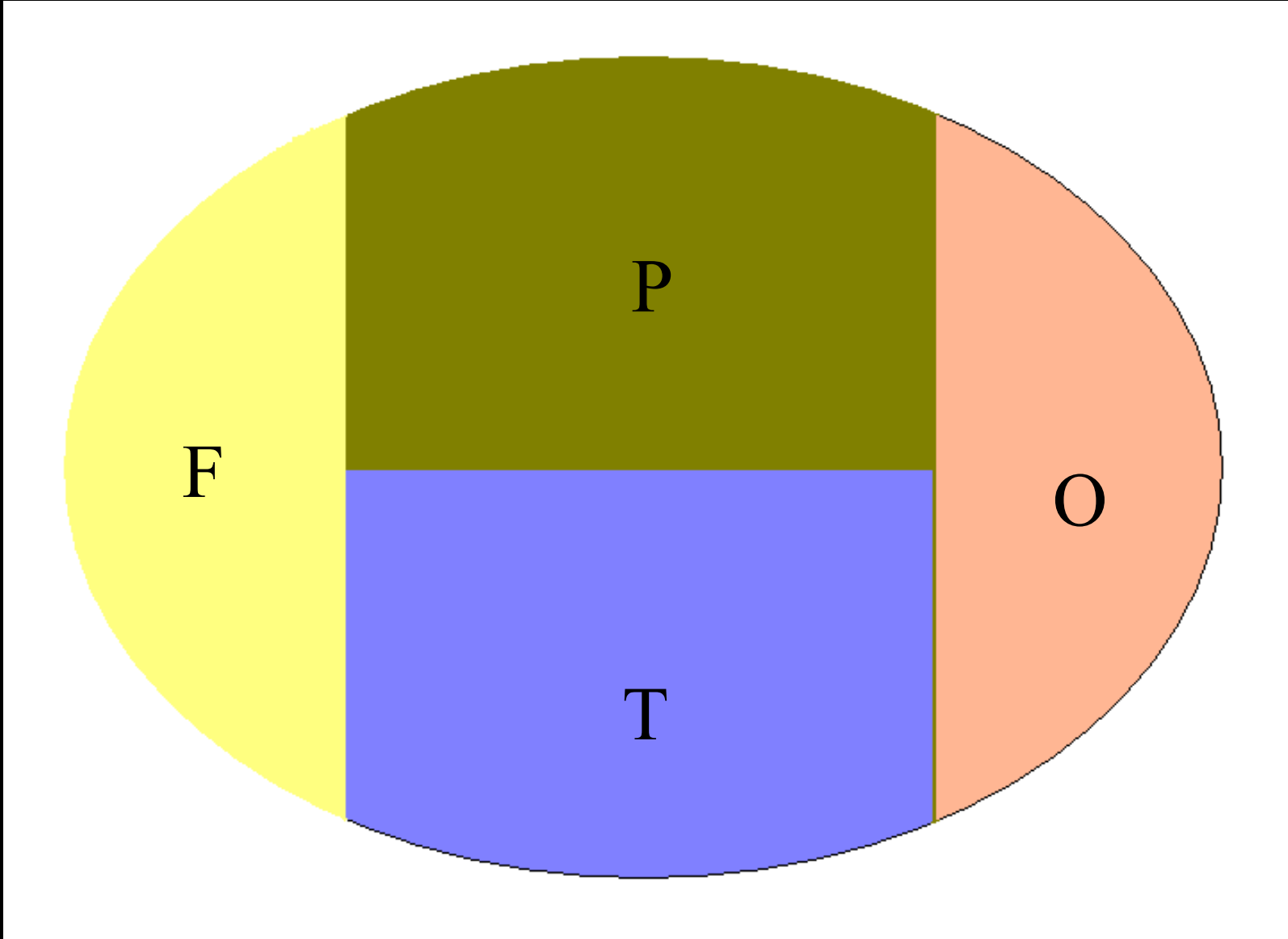


?V, sensory

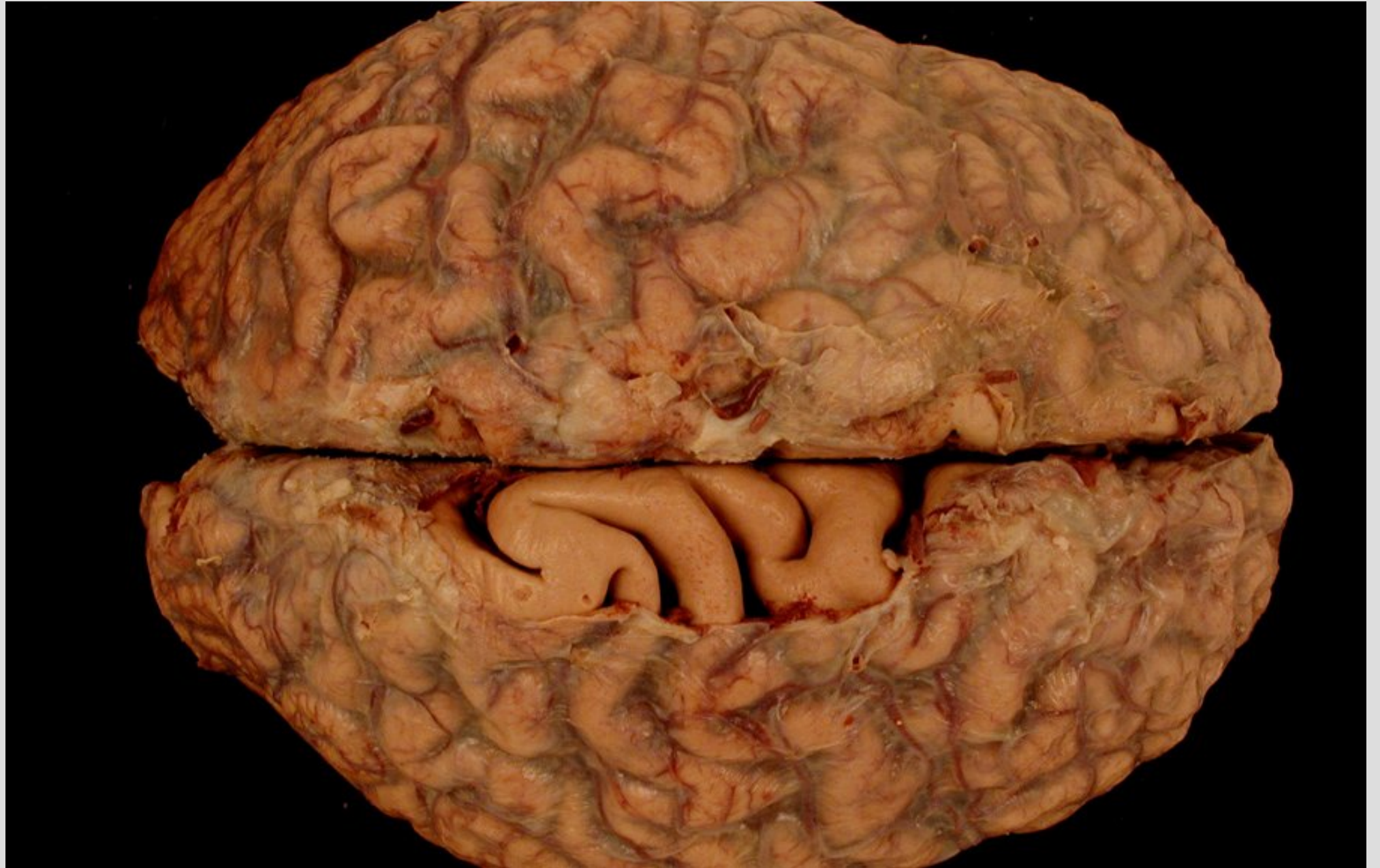
Both = Basilar

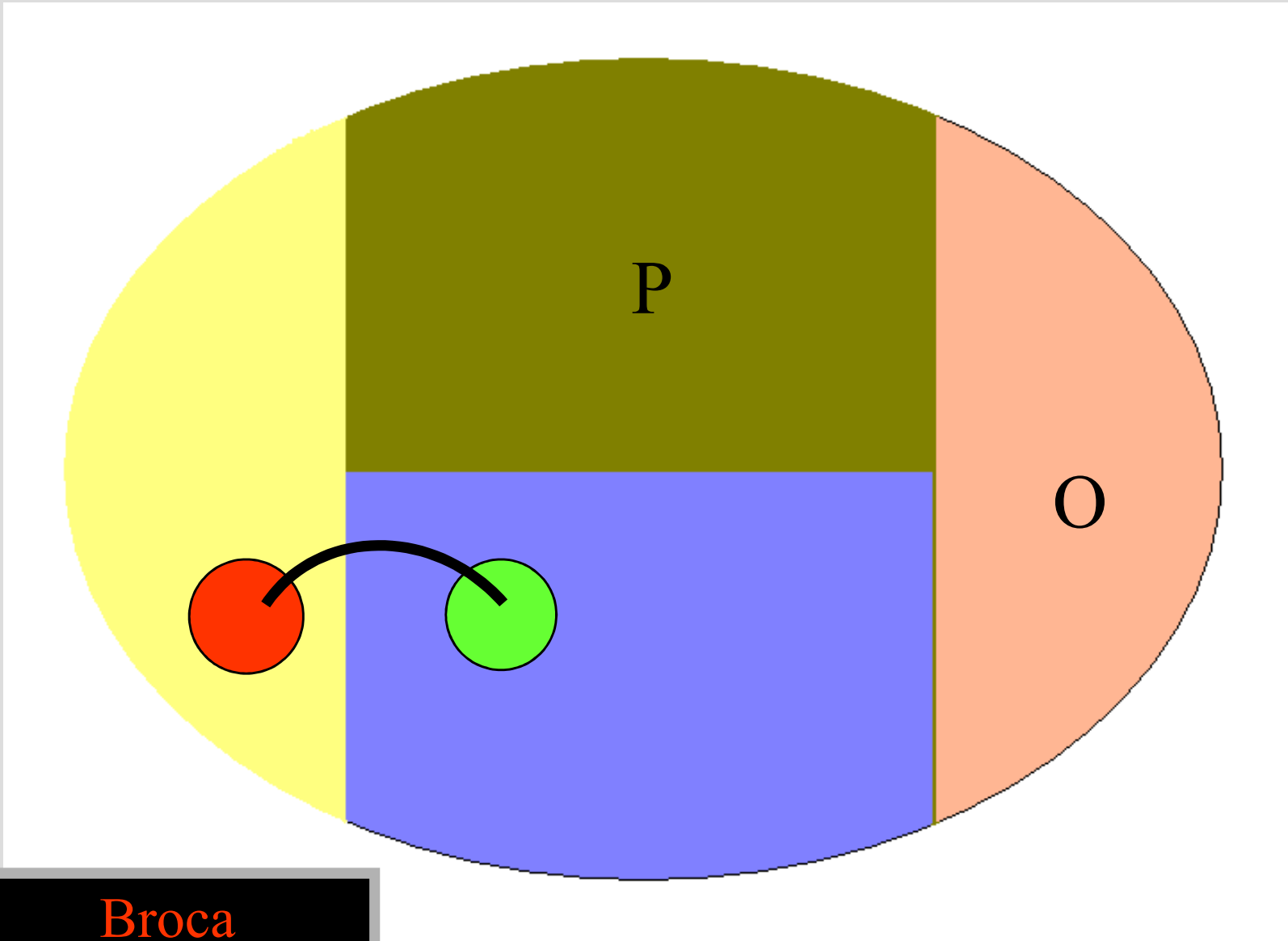












Broca
Wernicke

Aphasia

- Broca's
- Motor
- Expressive
- Non-fluent
- Frontal
- Ant.
- Production

- Wernicke's
- Sensory
- Receptive
- Fluent
- Temporal
- Post.
- Comprehension

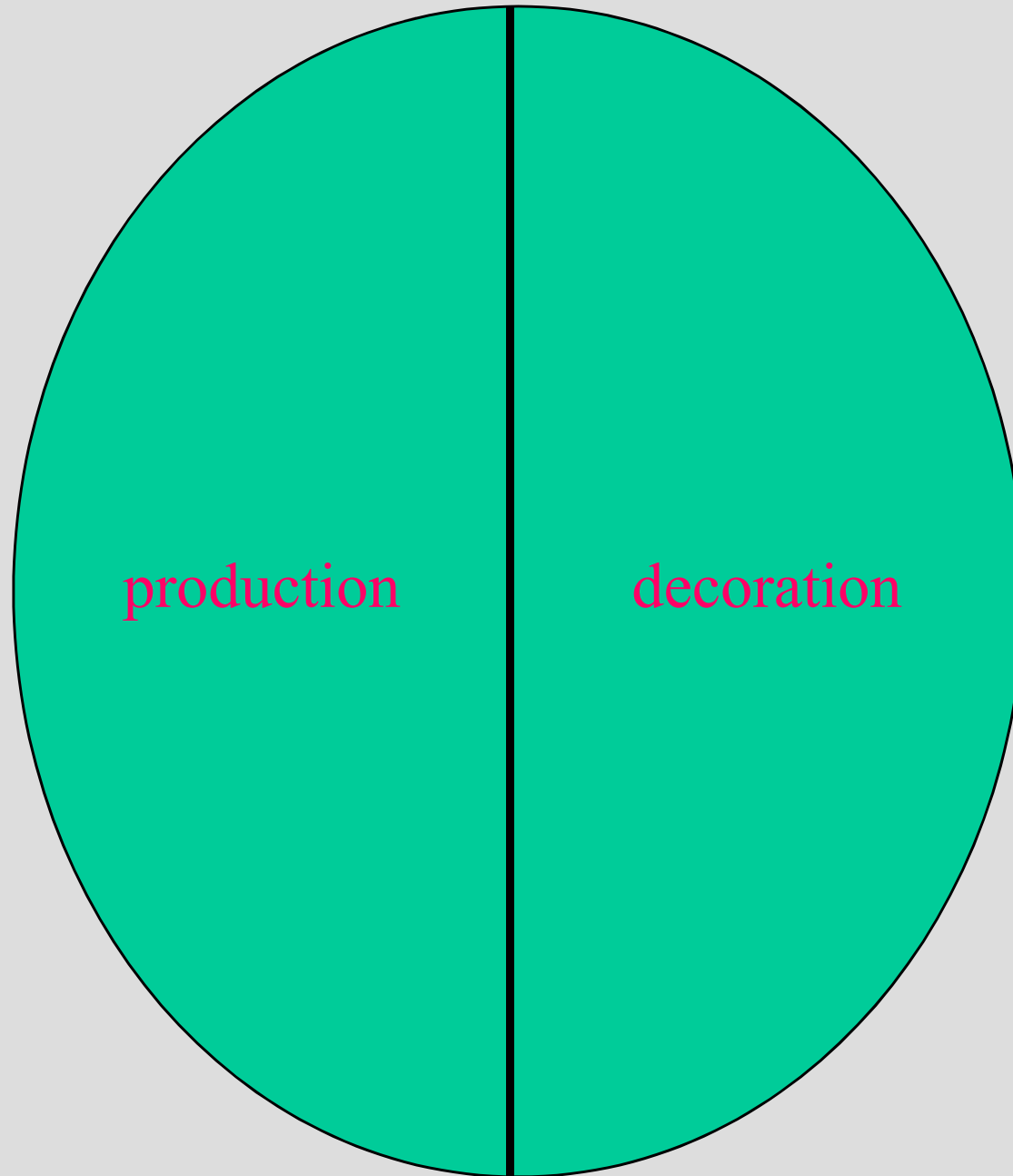
Both-----Global

Both-----MCA

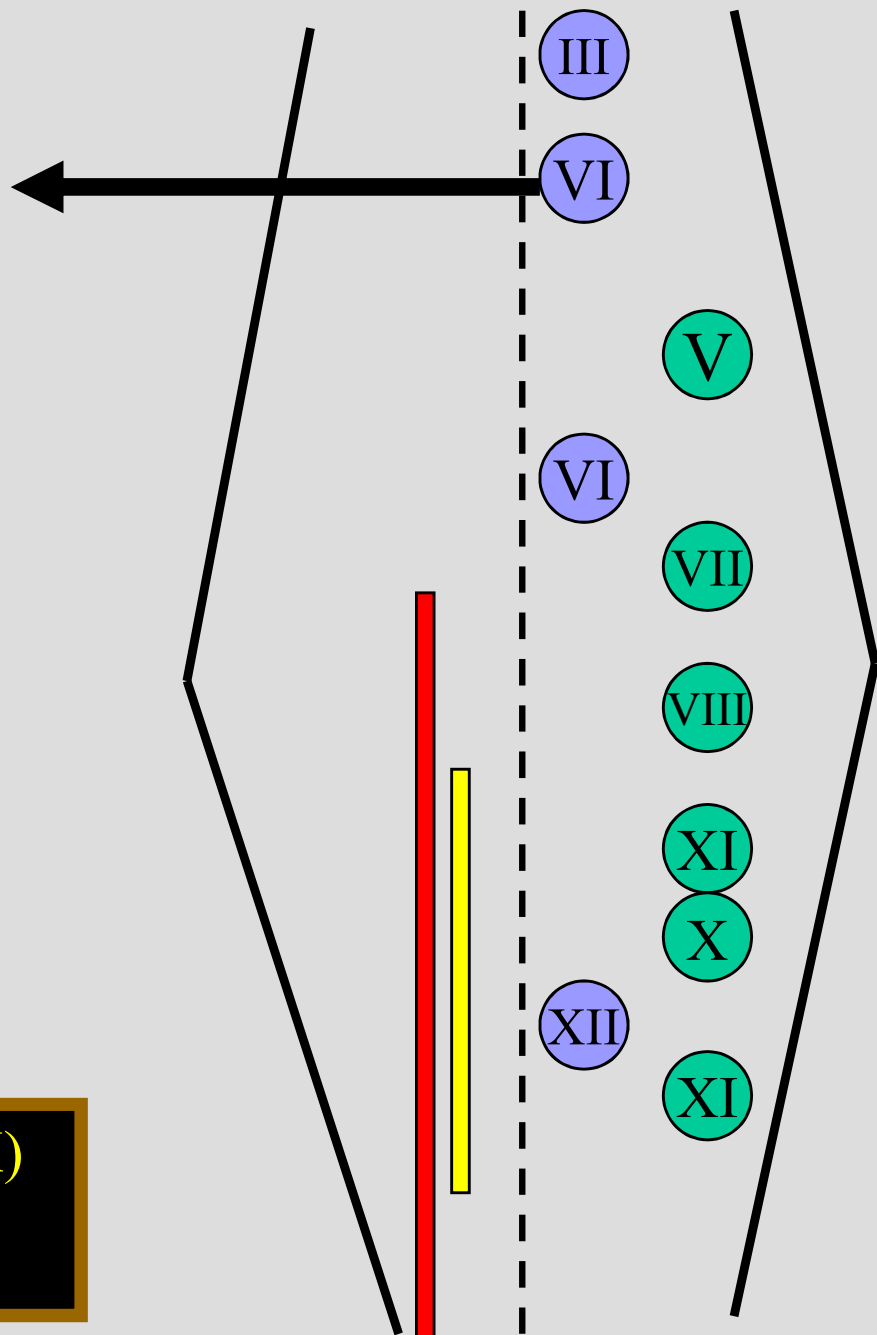
Anomia-----Metabolic, ALZ

Normal repeat-----Transcortical aphasia

Left

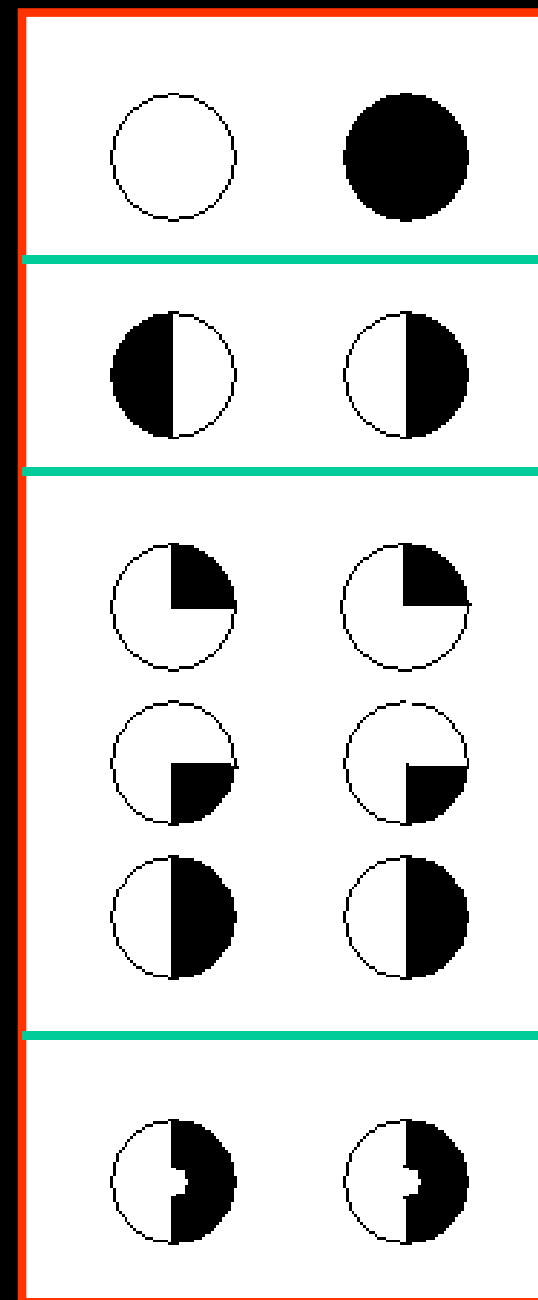
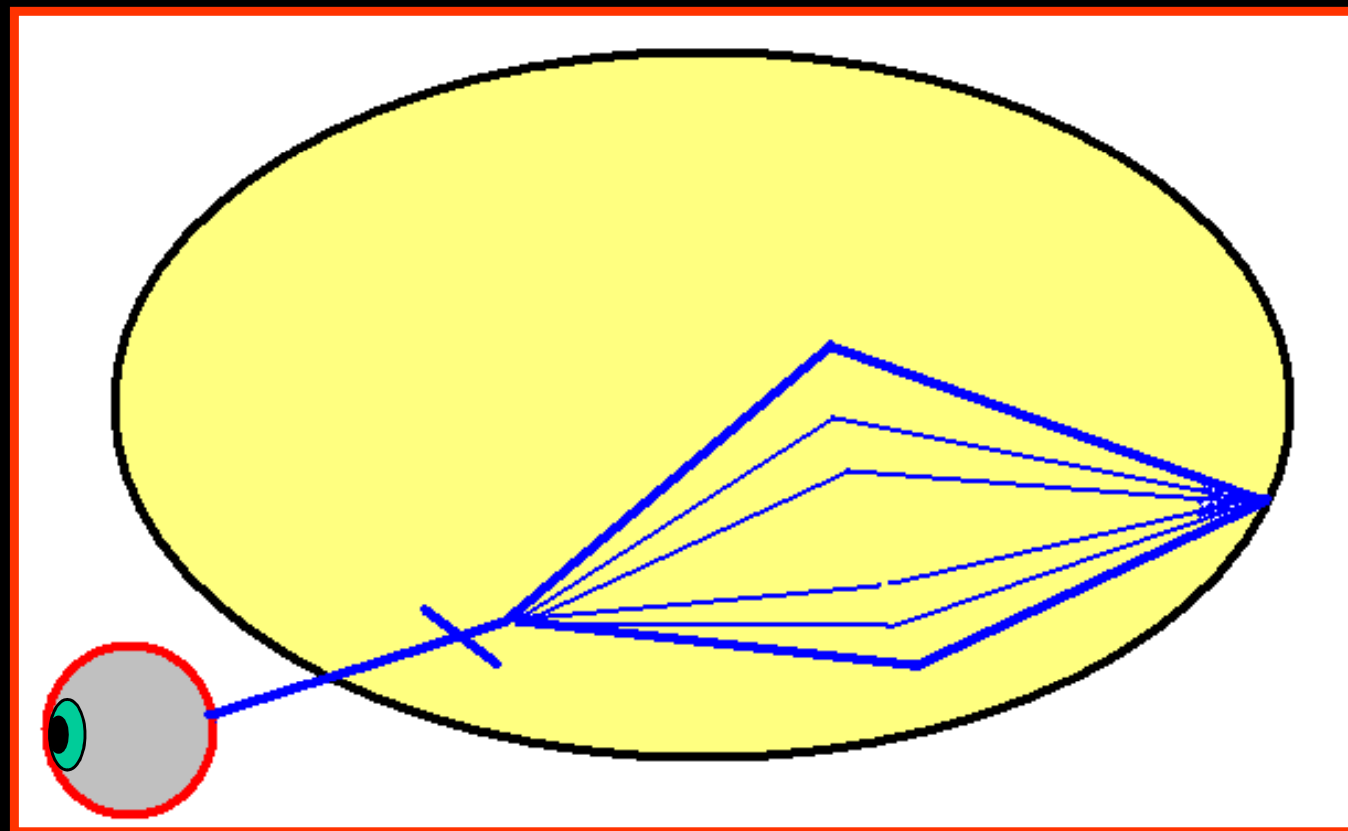


Right



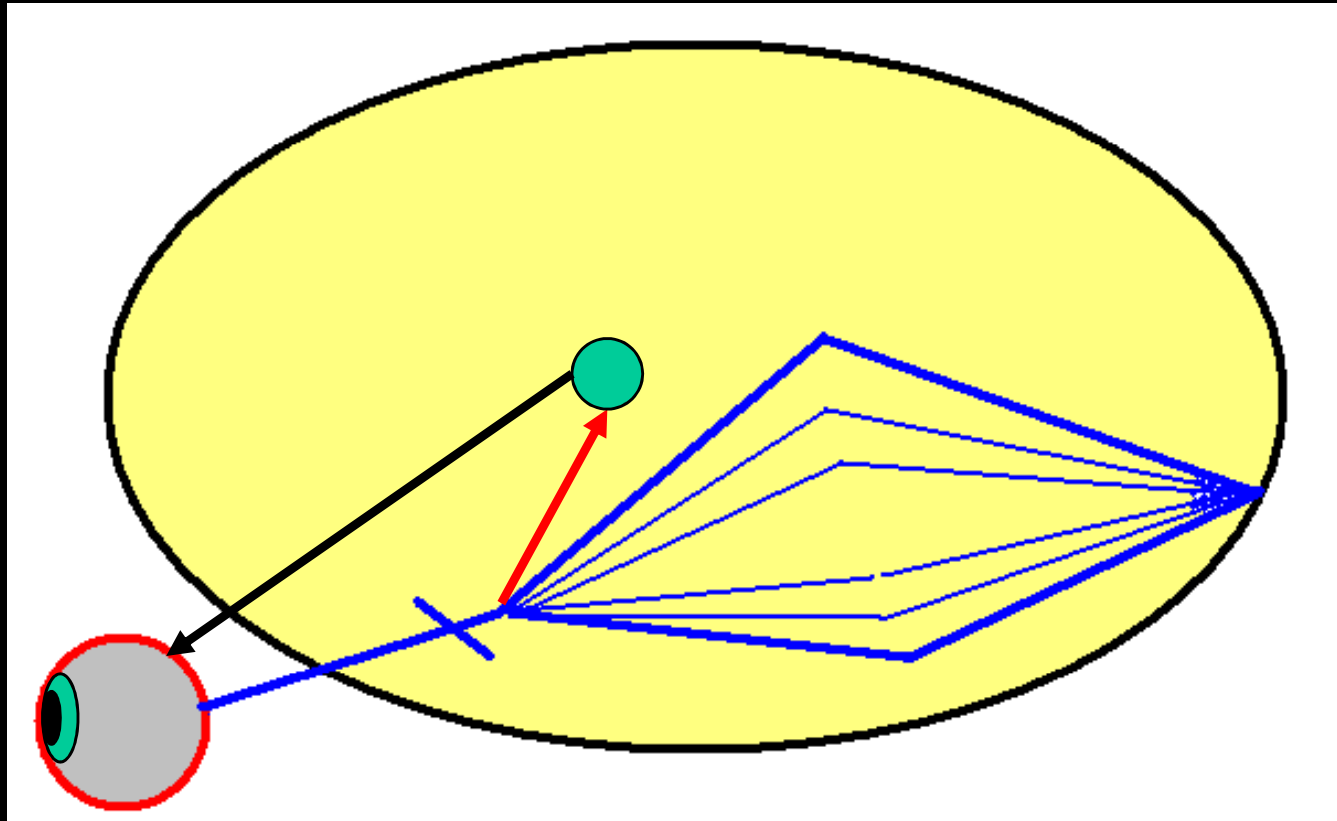
Solitary, sensory (VII+IX+X)

Trigeminal (spinal)



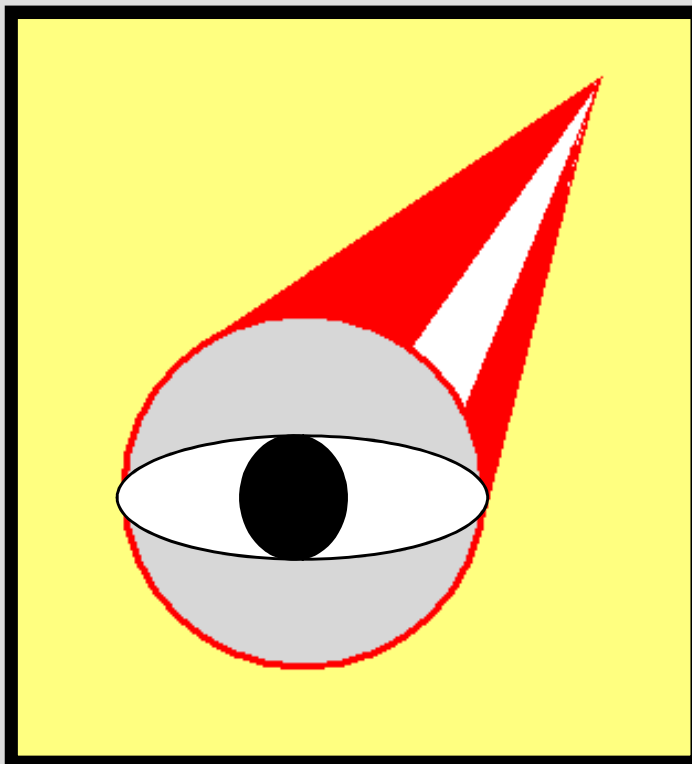
Edinger-Westphal

Intra-Ocular (pupil sphincter+ciliary)



Extra-Ocular (+sup.levator)

Inter-nuclear



- **III**-----PCA + SCA

Pupil---YES

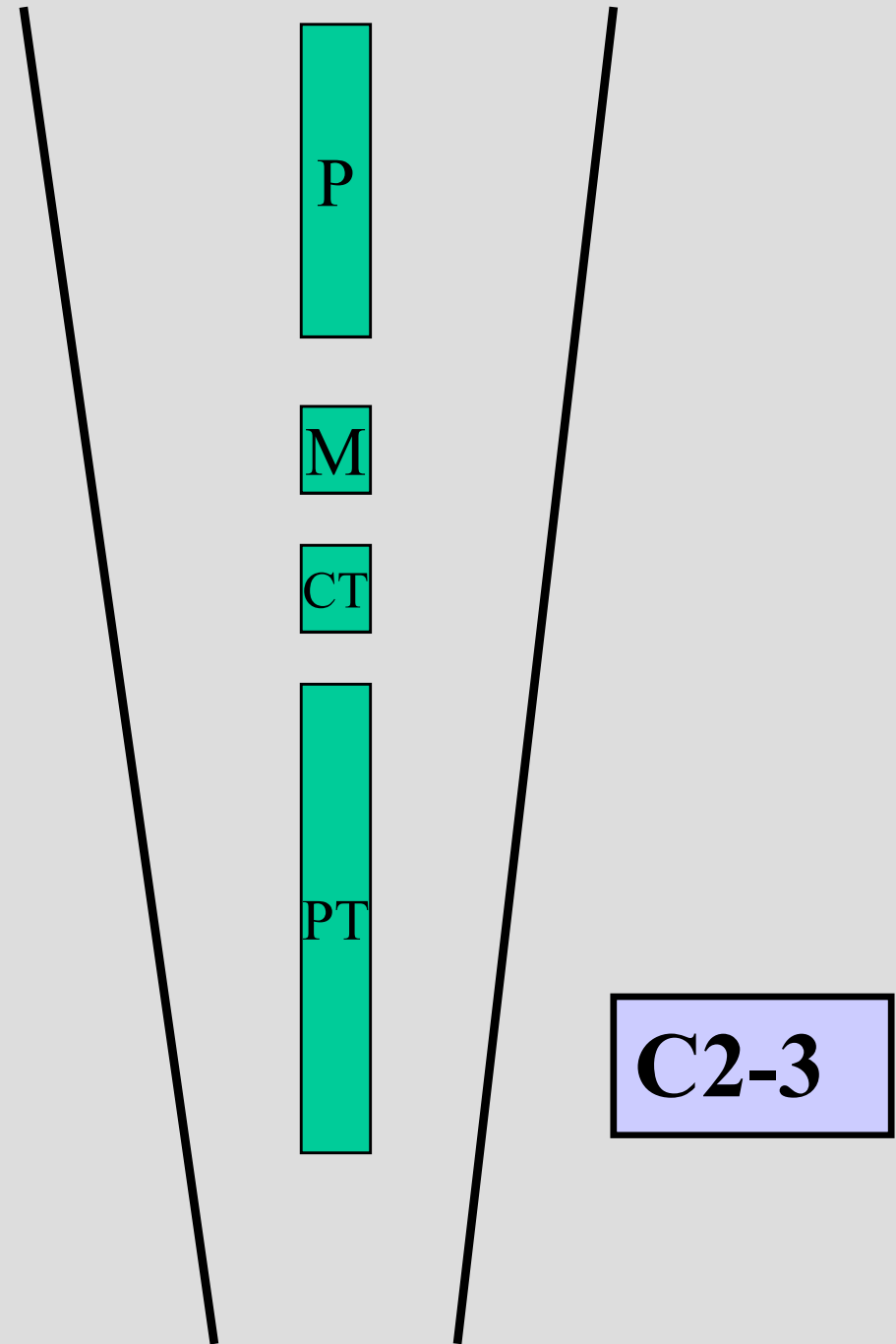
NO

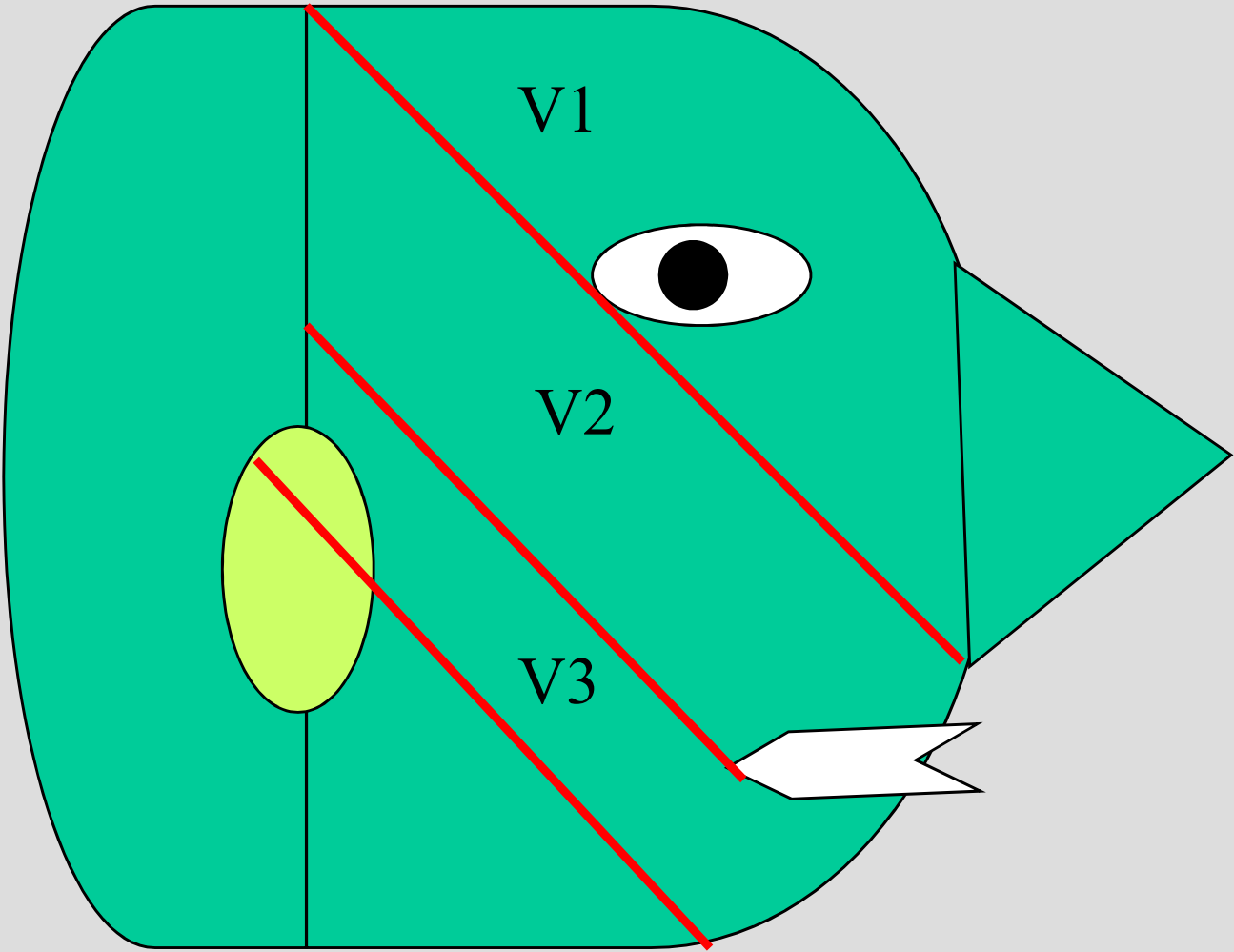
- **IV**-----Head tilt

- **VI**-----No localizing (longest, spoiled!)

S + M
Corneal
Nose + mouth
Onion
Numb chin

Neuralgia
Neuropathy

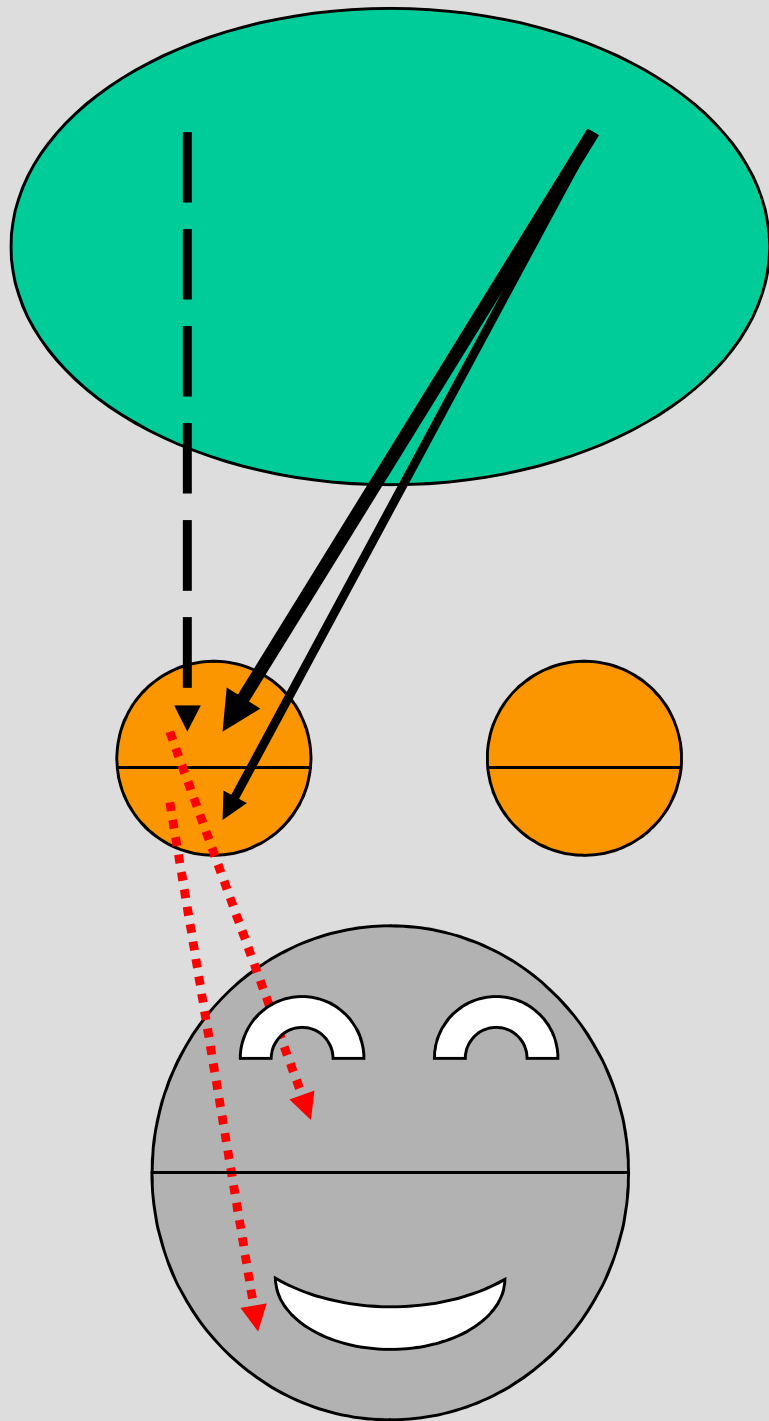




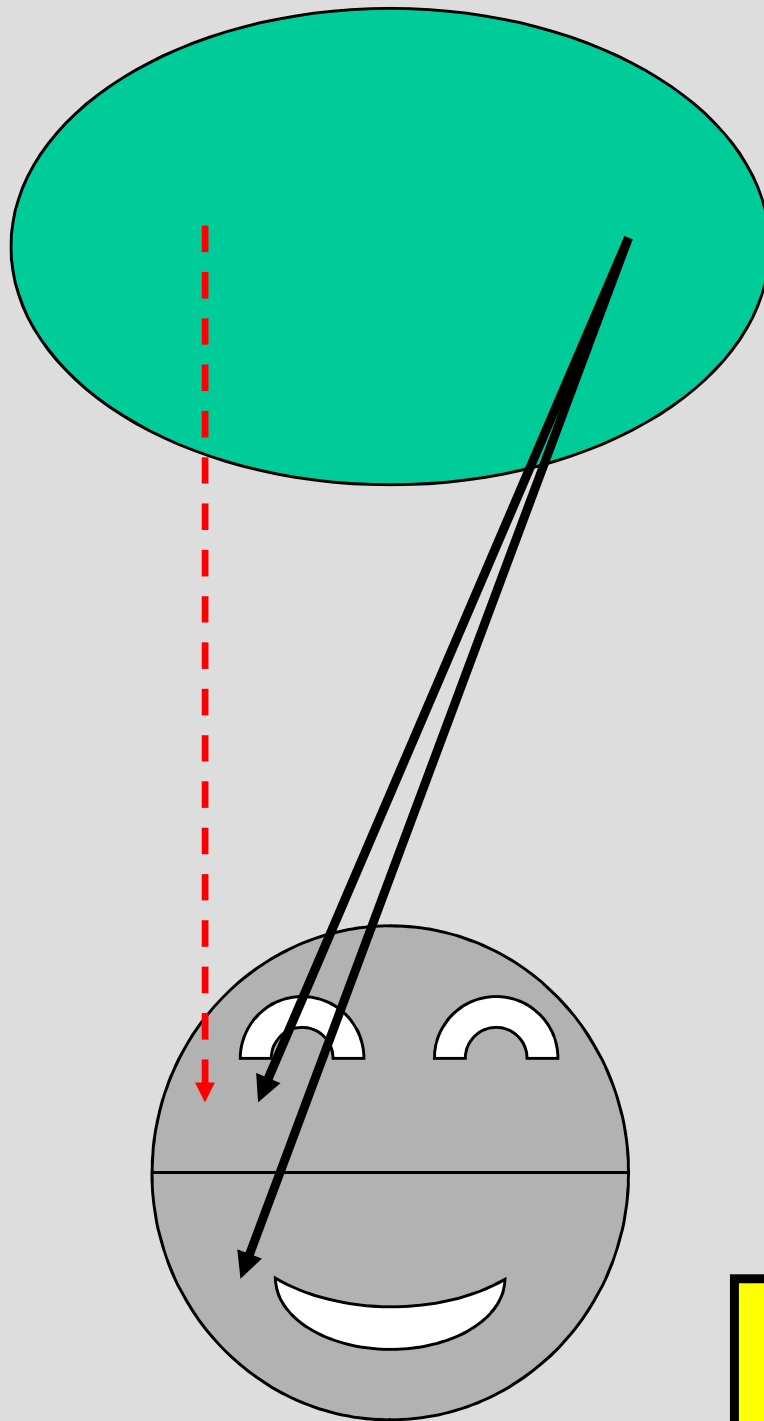
V1

V2

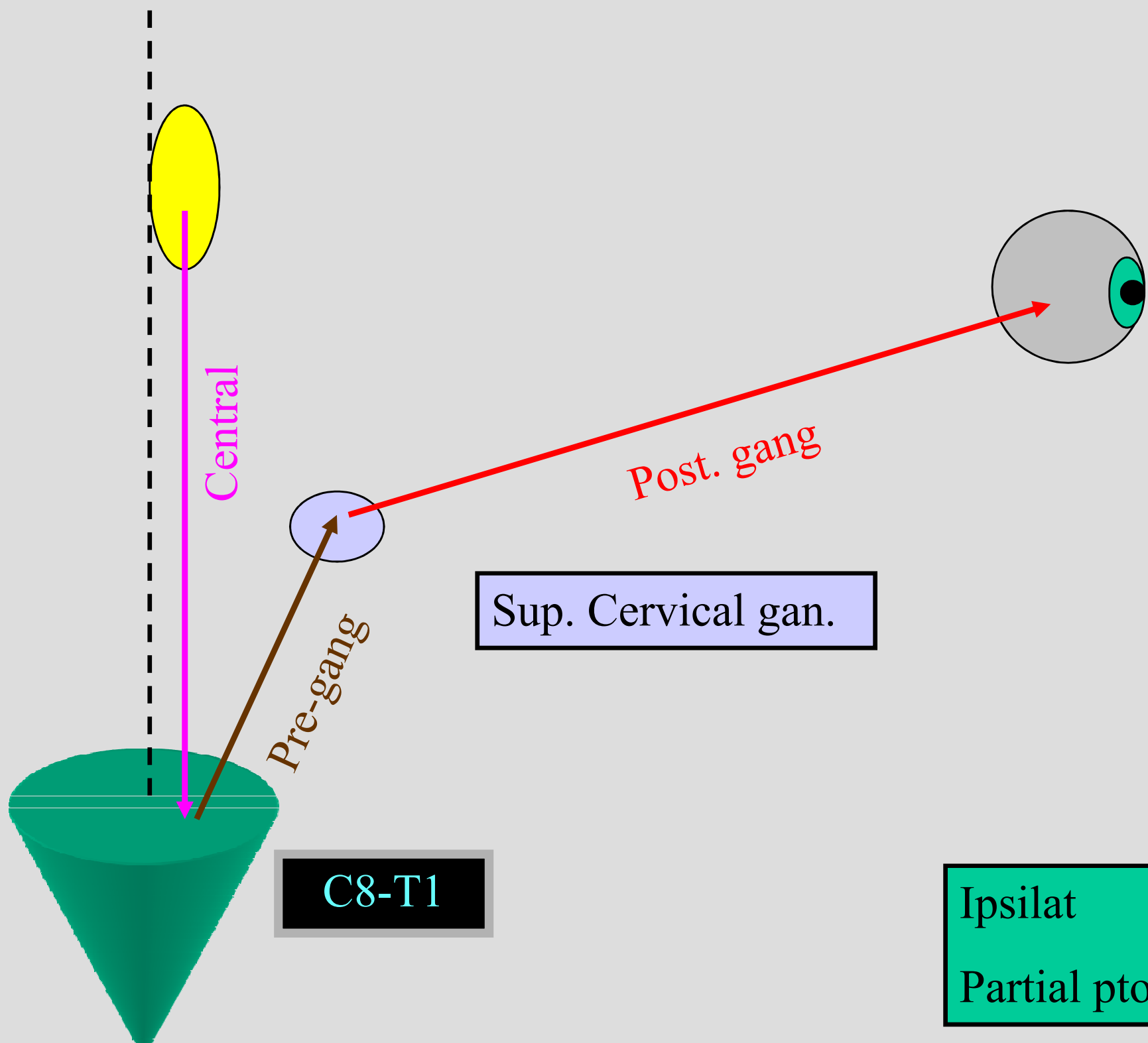
V3



UMN
LMN(nuclear)



For simple person
like me!



Central

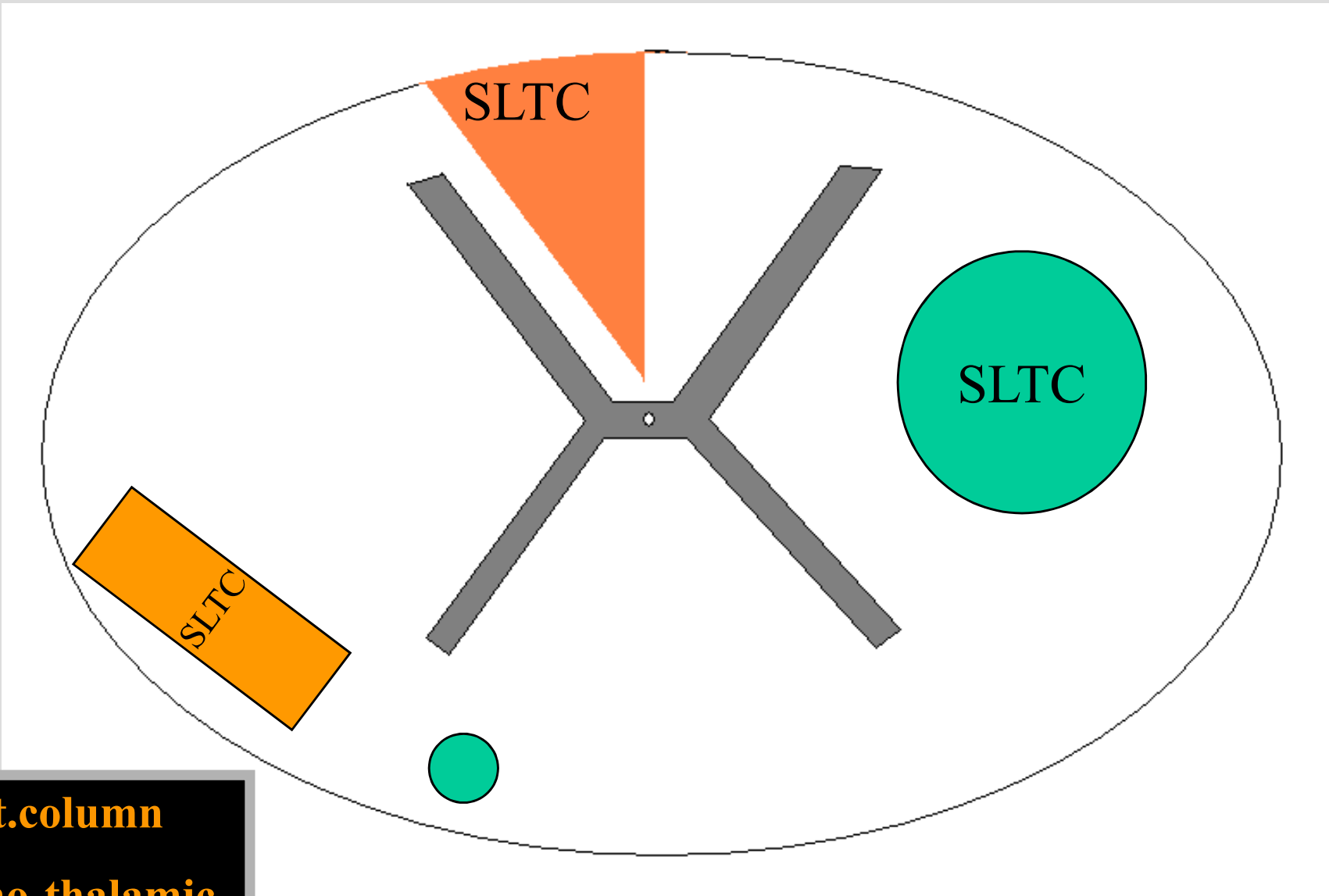
Pre-gang

Post. gang

Sup. Cervical gan.

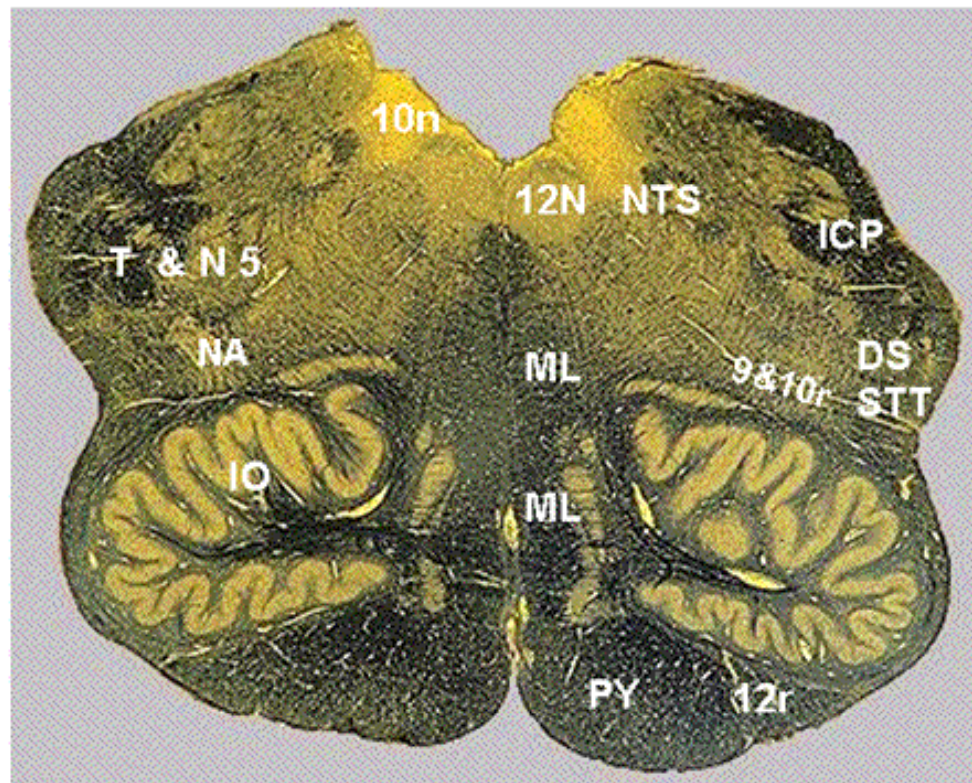
C8-T1

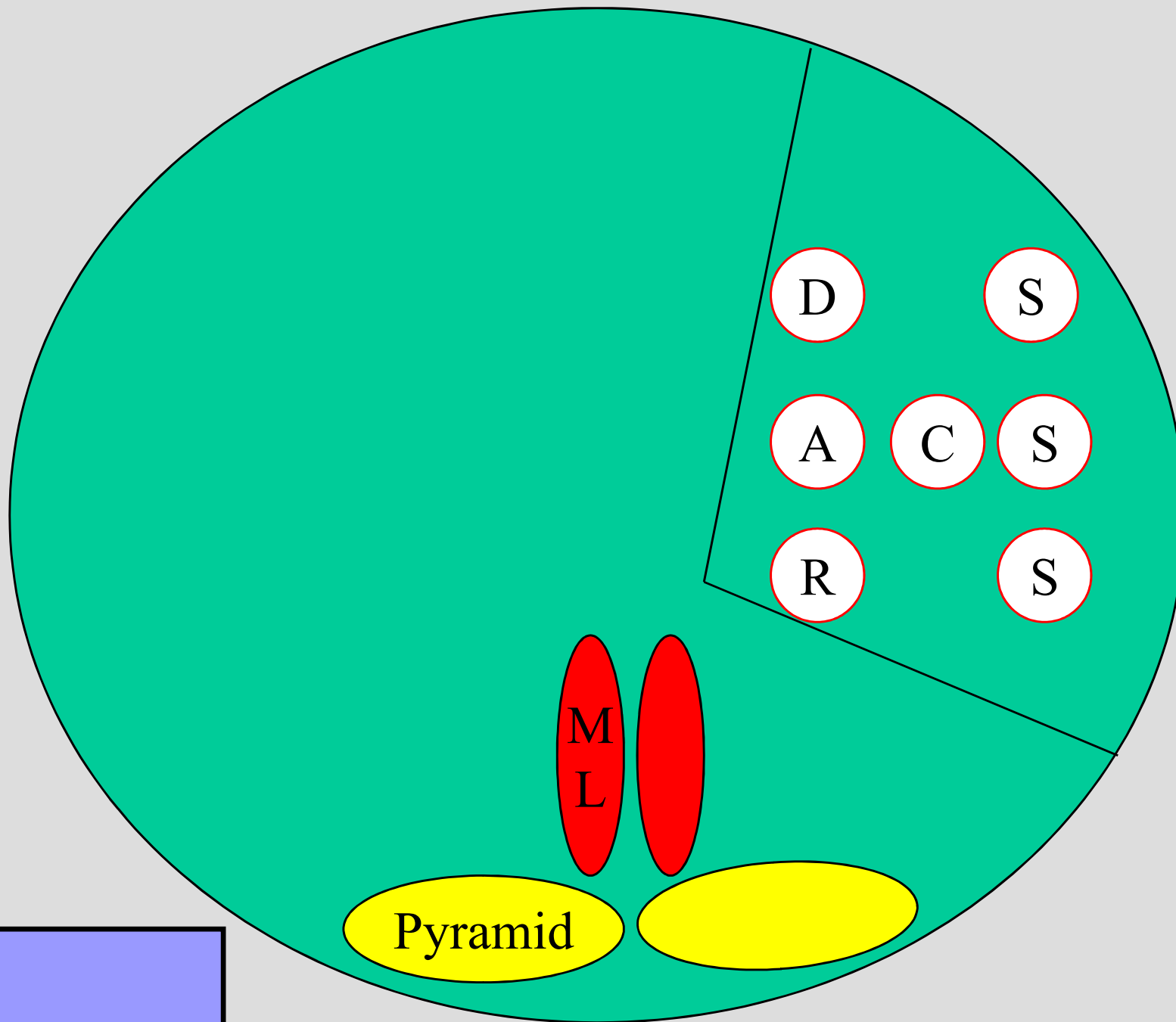
Ipsilat
Partial ptosis



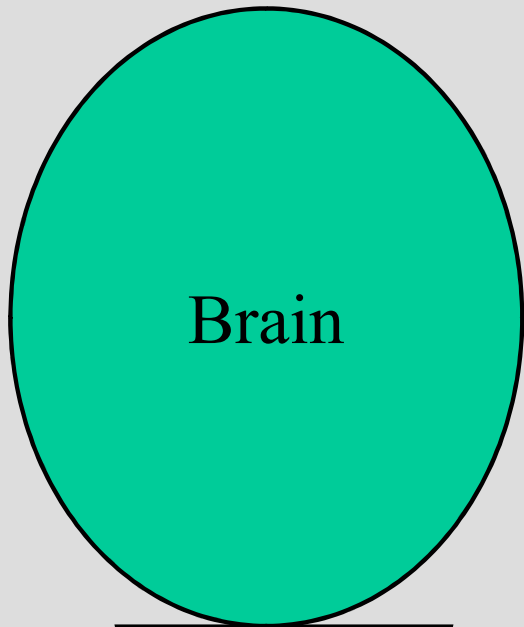
Post.column
Spino-thalamic
Cortico-Spinal

10N: Dorsal motor nucleus of vagus
12N: Hypoglossal nucleus
12r: Hypoglossal rootlets
NTS: Solitary nucleus & tract
ICP: Inferior cerebellar peduncle
DS: Descending sympathetics (location of)
STT: Spinothalamic tract
ML: Medial lemniscus
IO: Inferior olive
NA: Nucleus ambiguus
T&N5: Spinal tract & nucleus of trigeminal

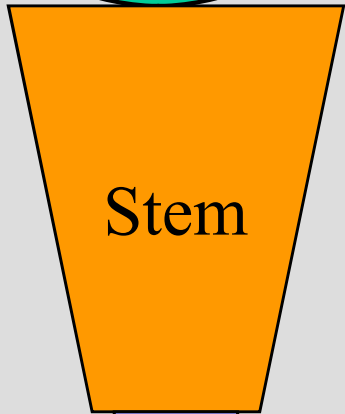




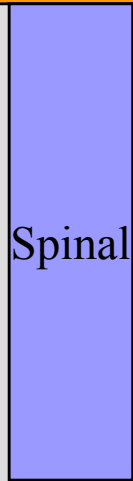
PICA
NO (motor + pos)



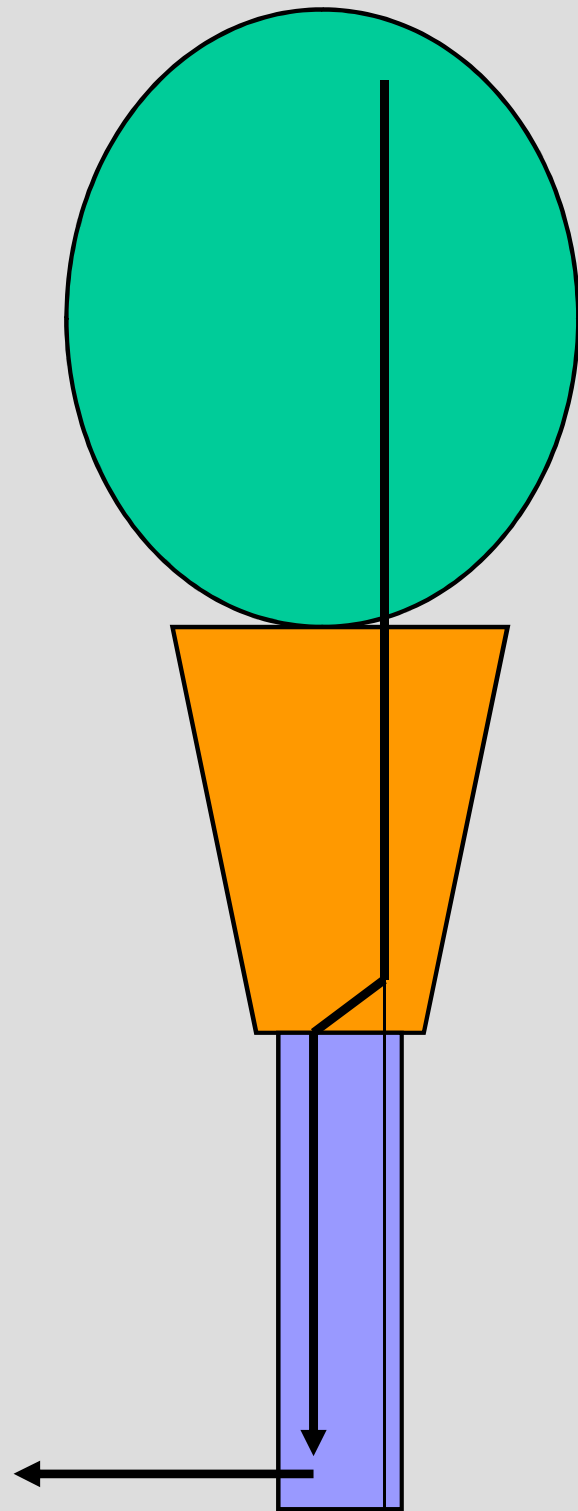
Brain



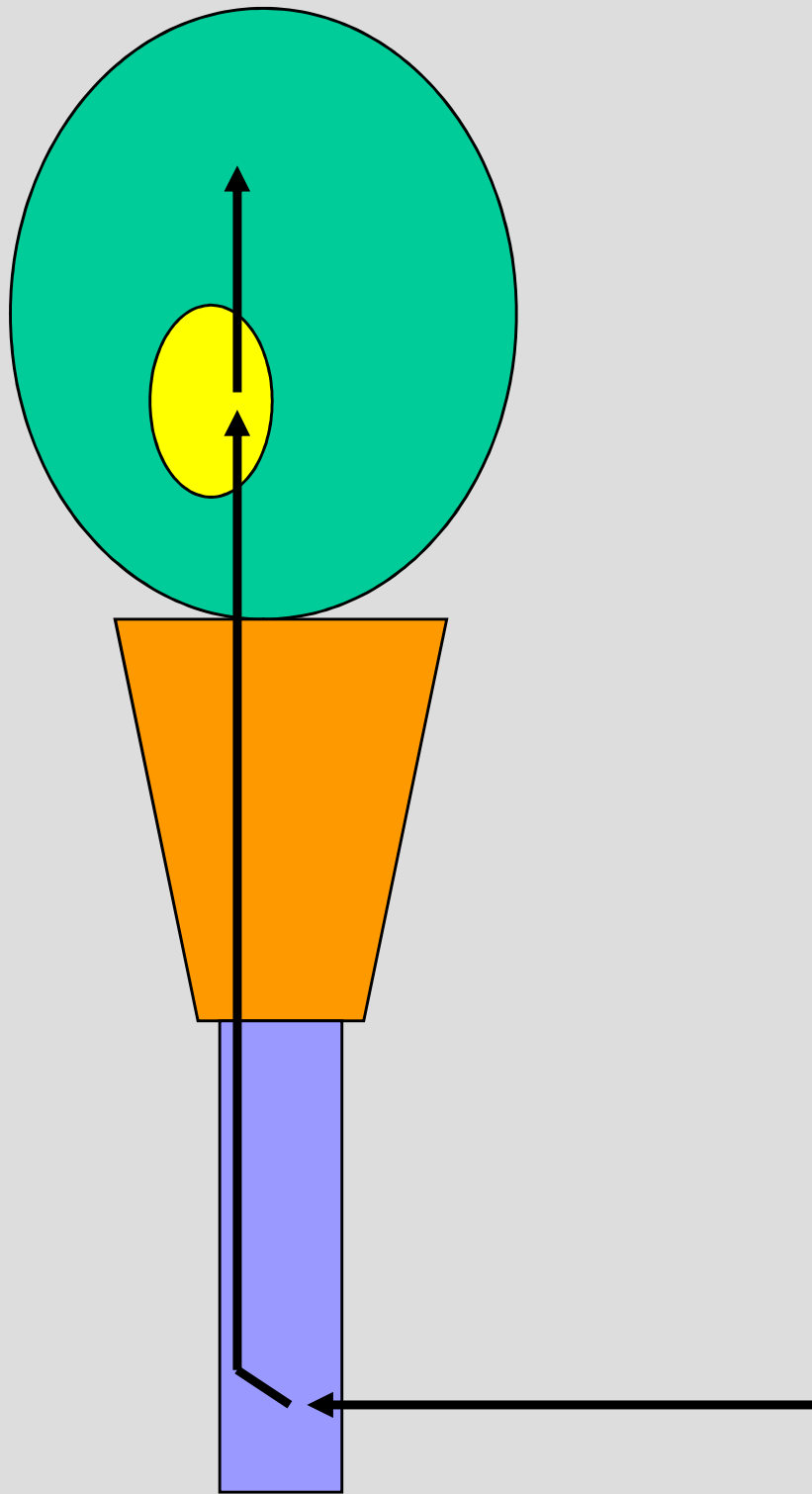
Stem



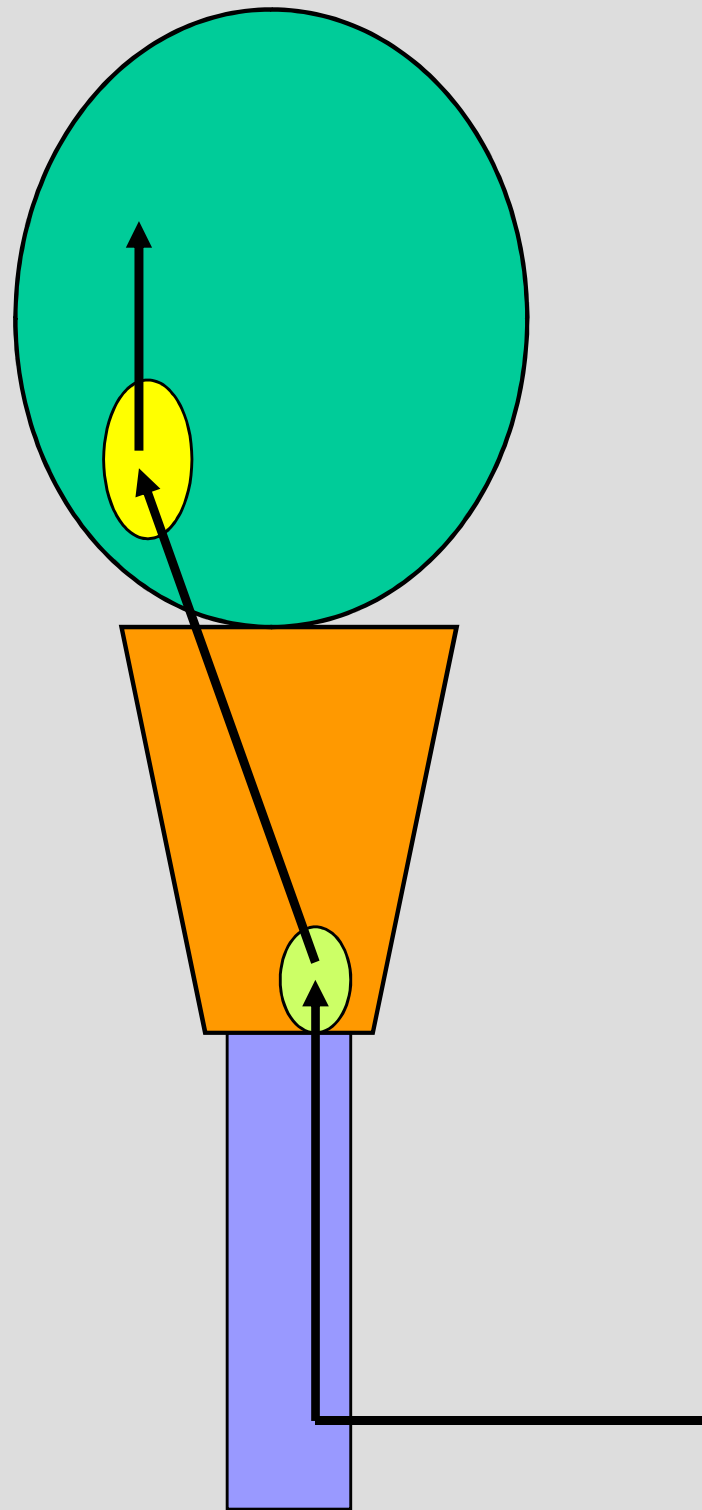
Spinal



Cortico-spinal
Pyramid



Pain + Tem
Lat. Spino-thalamic

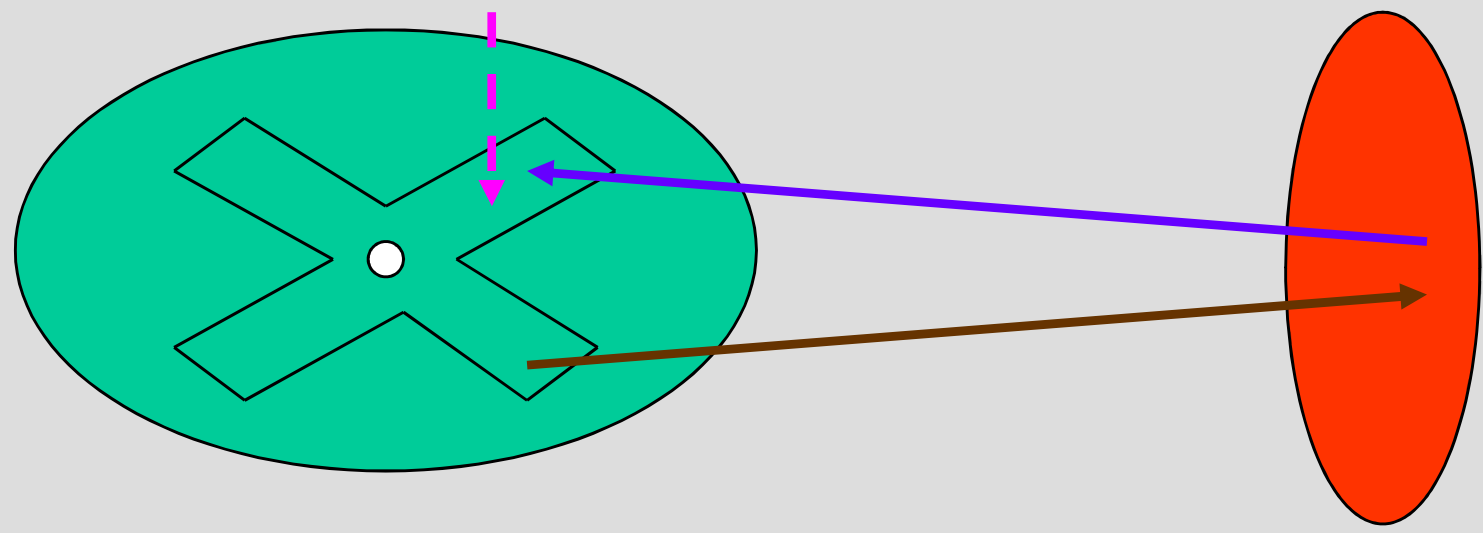


Pos + Vib
Post. column
gracilis + cuneatus

Ia fiber (afferent)

α 1 motoneuron (efferent)

Pyramidal



&#

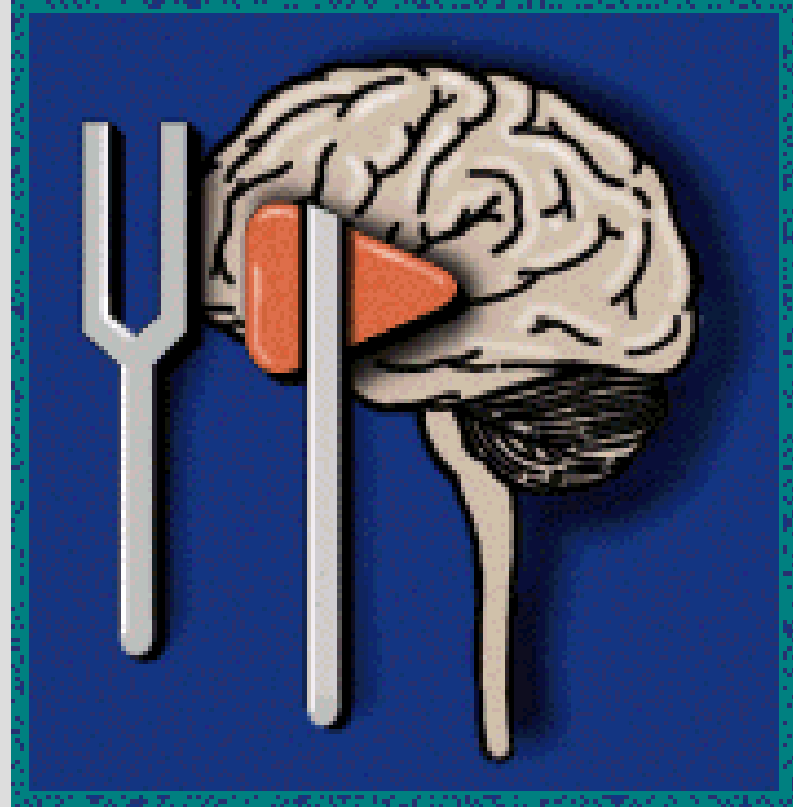
Sensory

Motor

DTR

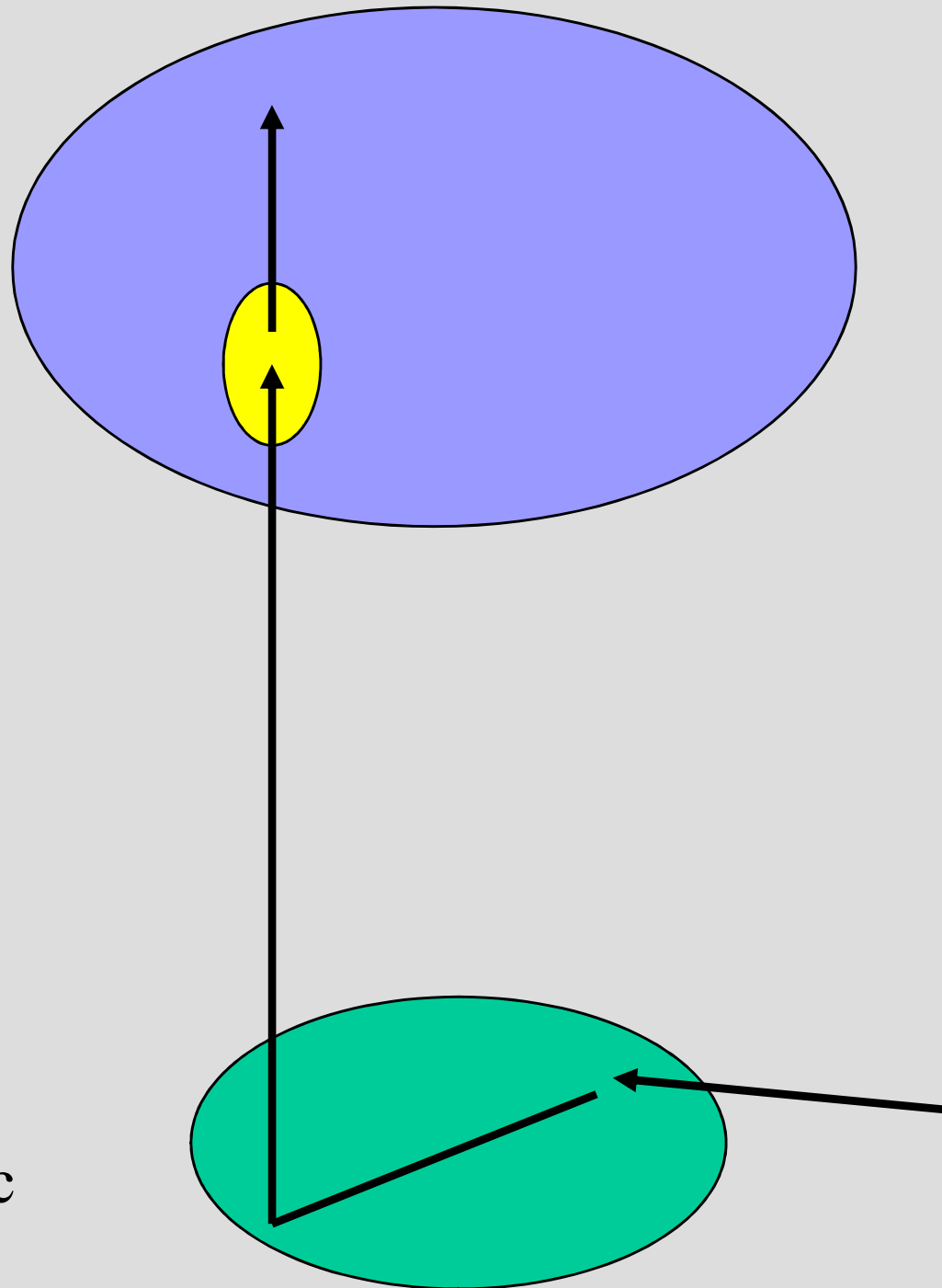


شكرا

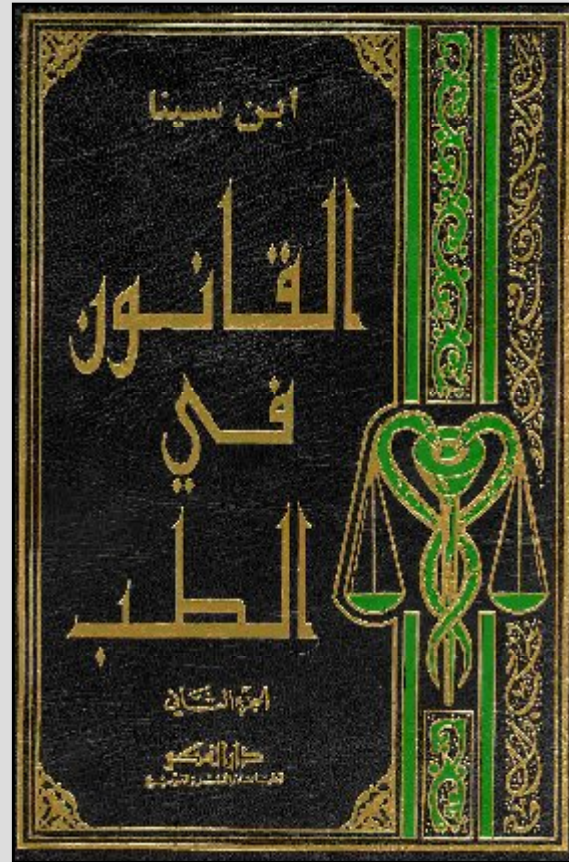


THANKS!

Pain + Tem
Lat. Spinothalamic



المقارنة الودود لنوبة الصرع اللدود



- Recognise SZ
- Classify Sz
- DD
- Points

Definition

Abnormal

excessive

discharges

- Sz

- Epilepsy

SZ Classification

Simple

Partial

Complex

Generalized

Primary

Primary

Idiopathic

Secondary

Secondary

Simple

Partial

Complex

Generalized

Tonic

Clonic

TC

A tonic

Myoclonic

Absence

Grand mal

Petite mal

Temporal lobe

Jacksonian

juvenile myoclonic

Focal Sz

Febrile Sz

Automatism

- Clinical diagnosis
- EEG

- Localization

fear, aphasia, visual

- Lateralization

jerking

dystonia, automatism, H/A

Risk factors

- Natal, Pre-post
- Trauma
- CNS infection
- Family
- Febrile SZ

- Tongue biting
- Incontinence
- Awakening fatigue + H/A

DD

- Syncope
- TIA
- Complicated migraine
- Hypoglycemia
- Pseudo SZ

History

- Pt
- Witness

Examination

- Normal
- Focal abnormality
- Post ictal